



# RIGA®

# PATTERN

## Product

Birch plywood (*Riga Ply*) overlaid with a phenol (dark brown, black, green) or an UV resistant (grey) film on both sides. The wear face has a special surface pattern (WT). The reverse face usually is smooth (F).

## Application

Flooring, transport industry, pedestrian bridges, storage and factory floors, storage shelves, loading platforms, pier surfaces, scaffoldings, ship decks, shop fitting and flight cases. In general surfaces where high wear resistance is required.

## Further processing

The processing options include: cutting, drilling, milling, jointing in length, tongue and groove (T&G), half laps, profiled edges etc.

## Advantages

Surface with high wear resistance, decorative appearance, weather- and water-proof, resists commonly used chemicals and easy-to-clean. In addition, the product is environmentally friendly and hygienic.

## Gluing classes

Plywood is glued with waterproof phenol formaldehyde resin adhesive. The weather and boiling water resistant bonding meets the requirements of the following standards:

*EN 314 / 3<sup>rd</sup> class;*  
*BS 1203 / H 4 (previously WBP);*  
*DIN 68705 Part 3 / type BFU 100.*

## Formaldehyde emission

In accordance with the standard *EN 13986* the formaldehyde emission meets the *Class E1* requirements (test method *EN 717 Part 2*). Plywood glued with phenol-formaldehyde resins meets the *CARB Phase 2* and *Japanese 4-Star Regulation's* requirements.

## LATVIJAS FINIERIS

AKCIJU SABIEDRĪBA



Bauskas 59, Rīga, LV-1004, Latvia  
Phone +371 67620857, Fax +371 67820112  
E-mail: [info@finieris.lv](mailto:info@finieris.lv)  
<http://www.finieris.com>

# RIGA®

# PATTERN

### Surface pattern

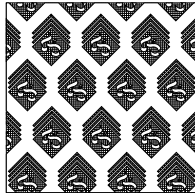


Figure 1. RIGA® Pattern surface pattern

The panels are overlaid with a film and have a special pattern imprinted in hot pressing process.  
Anti-slip class in accordance with *DIN 51130 R9*.  
The abrasion resistance of *Riga Pattern* and *Riga Pattern Heavy* is fundamentally different.

Type of overlay	Taber test results, revolutions	Rolling test results, revolutions
RIGA® Pattern ▶ Dark brown ▶ Grey	At least 600 At least 900	At least 2 000 At least 10 000
RIGA® Pattern Heavy ▶ Dark brown	At least 6 000	At least 10 000

### Edge sealing

The panels' edges are sealed with an acrylic paint, to avoid absorption of moisture. The edge sealing paint and the panels' face colors match, but even other colors are available upon request.

### Sizes

1220 mm x 2440 / 3050mm  
1250 mm x 2500 / 3000mm  
1500 mm x 2500 / 3000 mm  
1525 mm x 2440 / 3050 mm

Cut-to-size panels and machined panels available in accordance with the customers' requirements.

### Thickness

6.5, 9, 12, 15, 18, 21, 24, 27, 30, 35 mm.

### Tolerance

Dimensional and right angle tolerance meets the standard *EN 315* requirements.

Nominal thickness, mm	6.5	9	12	15	18	21	24	27	30	35
Number of plies	5	7	9	11	13	15	17	19	21	25
Average actual thickness, mm	6.4	9.2	12.0	14.9	17.7	20.5	23.4	26.5	29.4	35
Lower limit, mm	6.1	8.8	11.5	14.3	17.1	20.0	22.9	25.8	28.7	33.6
Upper limit, mm	6.9	9.5	12.5	15.3	18.1	20.9	23.7	26.8	29.9	35.4

Parameter	Tolerance
Length, width (mm)	
< 1000	± 1 mm
1000...2000	± 2 mm
> 2000	± 3 mm
Right angle	± 0.1 %
Edge straightness	± 0.1 %

Plywood is manufactured by AS *Latvijas Finieris* whose Quality Management System is certified to the requirements of *ISO 9001* by *Bureau Veritas Certification*.



The given information is for reference only and AS *Latvijas Finieris* reserves the rights to amend and supplement the specifications of manufactured products without a prior notice.